



Kidsafe

**ANNUAL REPORT
2021 - 2022**

A MESSAGE FROM KIDSAFE'S INTERIM CEO, KRYSTYNA NIZIOLEK

The past 12 months marks another extraordinary year at KidSafe.

According to research surrounding childhood trauma, all of the risk factors for adverse experiences can be offset by one thing, the presence of a stable, caring adult in a child's life. With over 90% of staff returning to work at KidSafe, having the continuity of familiar faces allowed for building strong personal relations and fostered important connections. Each KidSafe site was examined and adjustments were made to accommodate the different demographics of the children we served, KidSafe's goals around trauma-informed practice, place-based learning, enriching field trips and the addition of more Indigenous content into our programming, had a huge impact on the welfare of the children.

In this year's Annual Report, you will learn about the children and staff we have the privilege of working with, your important impact, and the amazing community of support that KidSafe donors continue to provide. This enables all of us to make a difference in a child's life. As prominent social/emotional professor and writer, Dr Daniel Goldman believes, 'Experience sculpts the brain'. What a child experiences in their life becomes part of their story and with your help, KidSafe provides the ability to impact each child's narrative now, and in the future.

In 2023 KidSafe will celebrate our 30th year of operation. Born out of response to a community tragedy, the Vancouver School Board, together with a core group of donors, created KidSafe to fulfill an important need when schools were not in session. KidSafe has continued to provide programs that promote safety, security and well-being for children who need it most.

I want to personally thank our incredibly generous donors, the KidSafe Board of Directors, our committed staff, and tireless volunteers for all that you do. Thanks to you, we can continue to provide another 30 years of safety and consistency in the lives of Vancouver's most resilient children and youth.

Warm regards,
Krystyna Niziolek



A MESSAGE FROM KIDSAFE'S BOARD CHAIR, SARAH ROTH

It is my absolute honour to serve as Chair of this amazing organization that is so close to my family's heart. I would first like to acknowledge and thank James MacInnis, immediate past Chair, for his expert leadership and decade long volunteerism on our board. He is also the person who recruited me and I can't say enough about his contributions to KidSafe.

As someone who has devoted their career and volunteerism to serving the nonprofit sector, I know how vital community support is for the health of our society.

In my day job as the CEO of the BC Cancer Foundation, I see firsthand the impact that donor dollars have on patient care - from the drug you are given to the machine you are imaged on. Likewise at KidSafe, we rely on the generosity of our community to ensure that our doors stay open, so that we can continue to provide a nurturing, caring environment for the children who need us most.

Your contribution to KidSafe provides vulnerable children access to nutritious

food, educational experiences, and trauma-informed supervision. KidSafe also directly supports families by providing care for their children so that they can continue to work or further their education. We are proud to support many new immigrant families, who have often come from traumatic circumstances, as they adjust to a new life in Vancouver.

Thank you so much for supporting our critical programs, and providing children a safe space where, no matter what they show up with, they can just be kids.

Warm regards,

Sarah Roth

CEO, BC Cancer



BOARD OF DIRECTORS

Sarah Roth, Board Chair

Rachid Nayel, Treasurer

James MacInnis

Joseph Abai

Kirk La Pointe

Zee Noorani

Kirk Rattray

Jyoti Sidhu

Peter Schwab

Alison Sinclair Burns

Lisa Southern

Teresa Virani

OUR STORY SO FAR

SINCE '93

For the 1 in 5 children in Vancouver living in poverty, school breaks can be a heightened time of uncertainty, particularly surrounding adult supervision, food security, and overall safety.

KidSafe was founded in 1993 by a group of concerned citizens, Vancouver School Board administrators, and community organizations, like the Vancouver Sun, when they recognized the need for there to be a safe place for vulnerable children to go when school is not in session.

For the last three decades, KidSafe has been operating during winter, spring, and summer breaks, and after school, providing children facing adversity access to a continuous safe space, food security, trauma-informed supervision, and enriching programming.

All of KidSafe's programs are 100% free. Every child who attends KidSafe is professionally referred to us as a school-aged child who needs a free, accessible, and safe place to go when schools are closed.

MISSION

Our mission is to provide a safe, nurturing environment for children who need it most.

VISION

Our vision is a city where all children and youth feel seen, heard and have a place to thrive

VALUES

Our values include trauma-informed practice, which acknowledges the impact that trauma may have on a child's life, place-based learning, which focuses on connecting children with their communities, and the universal design for learning, which involves meeting each learner where they are at and recognizing that everyone learns and experiences the world differently.

AT THE END OF 2023
KIDSAFE TURNS

30

2021-2022

AT A GLANCE

7

KidSafe sites
across Vancouver

180

trauma-informed
sessional staff

300+

households
supported

80+

place-based
field trips

30+

different
languages spoken

800

children reached

40,000

meals served

90%

staff retention rate

“

If I didn't have KidSafe my problems would be really big, but because of KidSafe my problems feel smaller.



OUR PROGRAMS AT A GLANCE

WINTER AT KIDSAFE



A massive amount of snow and the Omicron outbreak presented challenges for our 2021/22 winter program. However, we were able to keep our doors open and the children had a fantastic time. For many of the kids, this was their first time seeing the snow, so we spent a lot of time outside. We went sledding, made snowmen, built igloos, and more. Then Santa visited every site via Zoom, and each child got to open a stocking on-site and take home a present!

SPRING AT KIDSAFE



Spring breaks at KidSafe have a STEAM theme! The goal is to encourage the kids to stimulate their imagination and creativity around subjects that they might face barriers in accessing. The kids engaged in a range of different experiments, including building challenges and slime making. They also had the opportunity to visit Science World as a part of their Community Access Pass program.

100% of children surveyed said **they feel happy** when they are at KidSafe.

SUMMER AT KIDSAFE



This summer we were able to take the kids on regular field trips again for the first time since 2019. Some of their favourite visits included Britannia Mine Museum, UBC Botanical Garden, local beaches and water parks, golfing at the University Golf Club with the UGC Junior Golf Society, and exploring the trains at the Railway Museum of BC. Another highlight during Summer at KidSafe was Carnival Day at each site, a new KidSafe tradition! This year, in collaboration with our staff, the older kids stepped in as event managers to organize their site's Carnival Day for the younger kids. This empowered them and ensured that Carnival Day was tailored to each site's specific needs and interests. It was an action-packed day in the sun, with cotton candy, games, and ice-cream for everyone!

“I've never seen a train before! I thought they were only in England! This is the best day ever.”

- KidSafe kid visiting the Railway Museum this summer

KIDSAFE CONNECT



This fall, our single-purpose after school program, KidSafe Connect (KSC) resumed operation. KSC runs during the school year each week until our summer program starts up again in June. KSC reaches 60 children across 3 Vancouver School Board sites. It focuses on removing barriers to transportation by serving children at their local schools when the final bell rings for the day. KSC is led by a dedicated team of trauma-informed staff who have returned from previous programs. Every day at KSC, the kids have access to fun activities like arts and crafts or sports, a safe space, and a highly trained support network.

FOOD SECURITY

THE REALITY

With inflation reaching a 40-year high, access to adequate nutrition has grown even more difficult. We have met caregivers who have had to choose between rent or dinner, or have skipped meals so that their children can eat. We have also seen children store half-eaten snacks in their pockets so that their siblings have something to eat when they get home.

1 in 8 families in BC struggle with food insecurity

- Backpack Buddies

At KidSafe, we work to alleviate the barriers and anxieties that children may face when it comes to accessing food. We provide consistent, nutritious meals and an endless supply of snacks every day of program.

This would not be possible without the support of our incredible community partners.



Fresh produce from Windset Farms



Non-perishable, single-serve food from Backpack Buddies



Pastries, pizzas, and produce from Vancouver Food Runners



Herbs, edible flowers, and seeds for gardening from West Coast Seeds



Year-round snacks from Vancouver Firefighters Charities, which is central to our "Never Say No" snack policy



Non-perishable items like pasta and fruit cups from the Greater Vancouver Food Bank



Treats from Earnest Ice Cream for science experiments in the spring and Carnival Day in the summer



Food hampers, with essentials like dairy, produce and bread from CityReach Care Society



Generous donors, like Mealshare, make our Food Security Program possible

“

Over the last few years, food insecurity has been on the rise in our community. This has led to a lot of uncertainty for the children and families that we serve. However, thanks to the support of our loyal community partners and suppliers, our food security and nutrition education programming has remained strong. We've been able to continue to provide 800+ KidSafe kids access to warm breakfasts, nutritious lunches, unlimited snacks, and a variety of food hampers. We are so grateful for our dedicated group of supporters and cannot wait to work together in the new year!



Victoria Sunwoo
Manager of Food Security Programming

A photograph of two young boys sitting at a wooden table. The boy on the left is wearing a red baseball cap and a light blue surgical mask, looking down. The boy on the right is wearing an orange t-shirt and has blue and yellow face paint on his forehead, looking up and eating a piece of food from a white plate with a white fork. A single piece of food is also on the plate.

98%

**of children
could name a
favourite meal
they had at
KidSafe.**

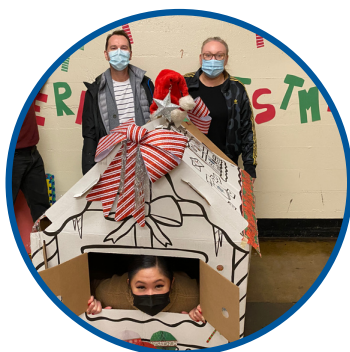
FUNDRAISING

WINTER CAMPAIGN



It was a great start to 2022 as our 2021 Winter Campaign raised a record-breaking \$337,185.40! This would not have been possible without the generosity of our community, including the anonymous group of donors who kicked things off by matching all donations up to \$50,000. Your support helps ensure that we are able to continue showing up for the 800+ children across Vancouver who rely on our essential programs. Thank you to everyone who contributed!

SPONSOR-A-SITE



Four generous organizations covered the costs to run programming at four sites during Winter at KidSafe. They also joined us before program to transform their sites into a winter wonderland for the kids. Each organization directly supported up to 25 children per site, providing them access to happy memories in a warm, safe, and supportive space throughout the holiday season. Thank you so much to Lithium Americas, iA Special Markets, Methanex, and Alexander Holburn Beaudin + Lang LLP.

GOLF FOR KIDSAFE



KidSafe's 2022 golf tournament, Golf for KidSafe, presented by the Peter and Joanne Brown Foundation, returned to an in-person format for the first time since 2019. It was an un-fore-gettable day in the sun at the University Golf Club, as we broke another record and raised \$276,640 for our essential programs! This is \$50,000 higher than our previous record in 2018, and would not have been possible without our sponsors, donors, golfers, dinner guests, and of course our hard-working volunteers.

STAFFING & RECRUITMENT

KidSafe's team of seasonal staff are central to achieving our mission. They work on the ground with the kids each day of program. Consistency is an important element of healthy childhood development, but unfortunately, is not a reality for many of the children we serve. That is why our 90% staff retention rate is so important. With 75% of participants returning from previous programs, the kids look forward to seeing the staff again who they have formed strong bonds with. As our staff retention rate increases, we're seeing the kids confide in the staff more and more. All of our staff are highly trained in trauma-informed practice so they can best support each child. They are also well connected with other community organizations should they need to refer a child who is undergoing a transition.



With 80% of our staff under the age of 30, KidSafe is making a direct investment in the next generation of workers - fostering responsible community citizens who are eager to make a difference in their communities.

We also prioritize making staffing opportunities accessible to previous KidSafe kids once they reach the age of employment. The excitement of potentially joining the KidSafe staff team one day is evident in many of the children and youth we serve.

I can't wait to work at KidSafe when I'm a grown-up! I'm going to help all the kids as you do!

The youth thrive with the leadership opportunities provided to them and they are eager to have the chance to give back to their communities and participate in the program that means so much to them.



We are grateful to have been recognized by Charity Village for a second year in a row as a finalist under the Best Youth Engagement - Organization (Under 20 Staff) category.

OVER A DECADE OF SERVICE

A CONVERSATION WITH KRYSTYNA NIZIOLEK & PATRICIA RAMOS

On a Monday evening, Krystyna Niziolek, our longest-serving board member, sat down with Pat (Patricia) Ramos, our longest-serving seasonal staff member. Over cups of tea and croissants, they reflected on their KidSafe journeys. Krystyna asked Pat about what brought her to KidSafe more than a decade ago.

In 2010, Pat was 18 years old and working at the YMCA when she was introduced to KidSafe by her colleague.

She initially joined the KidSafe team in the winter and worked as a volunteer before coming back as a site staff member in the summer.

Now, Pat has been leading our break-time programs at Queen Alexandra Elementary (KidSafe's first site) for 13 years. She does this in addition to her year-round jobs with the Vancouver School Board, the City of Vancouver, and the Vancouver Public Library.

When asked what keeps her coming back to KidSafe, Pat said, "The kids."

Research shows that a caring adult is the most important part of a child's healthy development. For many KidSafe kids, Pat has been and continues to be that adult. When children are in need of support, Pat is always there.

In tears, she recounts one particular story of a child who was brave enough to ask for help when life had become more than he could bear. Pat was able to provide not only support, but a much needed friend when things looked bleak.

To this day, Pat keeps in touch with many kids (now grown up) who are no longer in the program. She is the person they call when they graduate or land a job. She says, "It makes me proud to see them become good people who are happy! It's all I could ask for."

Despite changing the lives of so many children, Pat says, "I wish I could do more."

Though a lot has changed in the community since she started working at KidSafe, the need for there

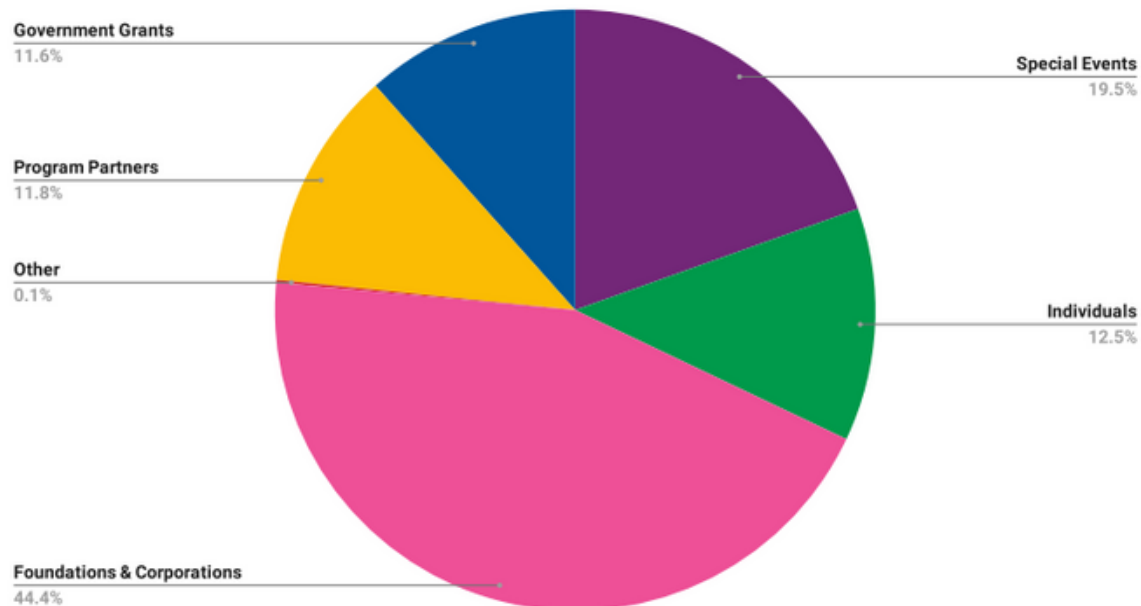
to be a safe space for kids to go, where they can access food and support when schools are closed, is still very high. That is why Pat, in her many jobs, remains dedicated to serving her community.

"I just want the kids to know that if they need someone, I'm here. No judgement."



FINANCIALS

WHERE FUNDS ARE FROM



COMMUNITY PARTNERS

A Palette of Fun
 Backpack Buddies
 BC Community Alliance
 HUB Cycling
 Chinatown Storytelling Centre
 CityReach Care Society
 Crofton House School
 Douglas College Careers
 Earnest Ice Cream
 Feelings First
 First Books Canada
 Foodstash
 Frontier College (Reading Tent)
 Greater Vancouver Food Bank
 Immigrant Lessons
 Insight Global Education
 Isa Mundo

Jay's Care Foudation
 Kids Up Front
 Kim Peacock
 Luna Designs
 LUSH
 Mealshare
 Mulgrave High School
 North Shore Restorative Justice
 Our Community Bikes
 Panago
 Queer Community Collective
 Red Cross
 Richard Crossman (Santa
 Dundas)
 Sal y Limon

Sanchez Coach and Tours
 Science World
 SeaSmart
 Share Dance (New Works)
 Sport4U
 Stable Harvest Farms
 Toques from the Heart
 UGC Junior Golf Society
 UBC Botanical Garden
 Vancouver Board of Education
 Vancouver Firefighters Charities
 Vancouver Food Runners
 Vancouver Park Board
 West Coast Seeds
 West Point Grey Academy
 WildPlay



SUPER HEROS

\$100,000+

Anonymous Foundation

HEROES

\$50,000 - \$99,000

City of Vancouver

Department of Employment & Social
Development Canada

The Grayross Foundation, held at Vancouver Foundation
iA Financial Group

Peter & Joanne Brown Foundation

Vancouver Sun Children's Fund Society

CHAMPION

\$25,000 - \$49,999

Breakfast Club of Canada

Cause We Care Foundation

Community Food Centres Canada

Lithium Americas Corp.

Mary and Gordon Christopher Foundation

Mealshare

Riley Foundation

The Stollery Charitable Foundation

\$15,000 - \$24,999

Alexander Holburn Beaudin and Lang LLP

Ames Family Foundation

Blue Planet Links Foundation

BlueSky Properties Charitable Foundation

The Harvey and Jody Dales Family Philanthropic Foundation

Brady Fletcher

James & Allison MacInnis

Methanex Corporation

North Growth Management

Wheaton Precious Metals Corp.

Wolrige Foundation

\$10,000 - \$14,999

The Beedie Group

The Cedrus Foundation

CLICK

Diamond Foundation

Hamburger Hockey League Members (John Brosseau,

Stephen Custeau, Brian Duncan, JS Dyer Law Corp, George

Brazier, Joe La Leggia, Alexander Langer, Brian Mauch)

Haywood Securities Inc.

The Huscroft Family

Ledcor

Dr. Bik May Wai & Dr. Chung Nin Lam Endowment Fund held
at MakeWay Foundation

Cheung Kei So Memorial Fund

Oasis Foundation

RBC Phillips, Hager & North

Lisa Southern

Robert & Maria Tanaka

Victor and Anna Kern Foundation

Willow Grove Foundation

MENTORS

\$5000 - \$9999

Trent Anderson

CIBC Wood Gundy Bentall

Fasken

The Fletcher Family

Fort Capital Partners

Fresh Direct Produce

Judy Gale

Linda Gibbs

Greater Vancouver Food Bank Society

Interfor

John Hardie Mitchell Family Foundation

Margo Fluker Private Giving Fund held at Nicola Wealth

Private Giving Foundation

William McCarthy

McMillan LLP

Darrell & David Mindell

Munford Family Foundation

Nathanson, Schachter & Thompson

Krystyna Niziolek

Kelly & Doug Rae

Railway Museum of British Columbia

Sarah Roth

Sandstorm Gold Royalties

Marcia Sauder

Ventana Construction Corporation

Youth Musician & Artist Association (YMAA)

\$2500 - \$4999

Bank of America

Michaelanne Buckley-Dodds

Bettina & Jeff Charpentier

Teri & David Christopher

Dignity Memorial

Bob Disbrow

Djavad Mowafaghian Foundation

Michael Dodds

The Federation of Community Social Services of BC

FISPAN

Fluor Canada Ltd and employees

Foley's Candies

Joan Ford

Vicki Hamill

John Kump

Joe and Carla La Leggia

Lawson Lundell LLP

Mago Charitable Foundation

Tracey McVicar

Navid Morawej

Mulgrave School

NexGen Energy Ltd.

Andrea O'Leary

Michael Oland

Royal Bank Financial Group

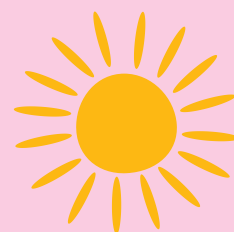
Peter Schwab & Linda Kuik

SONA

Vancouver Holdings

West Coast Liquor

Alexi Zawadzki



MENTORS

\$1000 - \$2499

Abbrione Charitable Account via by Strategic Charitable Giving Foundation
 Earth's Own
 Liz Armstrong
 ACG British Columbia
 Beech Foundation
 Rob Blanchard
 Steve & Catherine Borritt
 Dan & Ursula Bowditch
 George Brazier
 Brendan Burns
 Canaccord Genuity
 Wei-Li Chen
 Sean Christopher
 Debra Clark
 Corix Infrastructure Inc.
 Michael Cossever
 Stephen Custeau
 Dayhu Group of Companies
 Deans Knight Capital Management Ltd
 Dekker Hewett Group
 Marna Disbrow
 Brian Duncan
 Edmison-Robins Family
 Sean Fahy
 John Fuerst & Pat Gill
 Grounded People Apparel Inc
 Jolanta Proczek PREC*
 Keltech Ltd.
 Conor M Kinsella
 Alexander Langer
 Jocelyn Lewis
 Janette Lindley
 Todd Martin
 Elizabeth Moxham
 Jenny Muir
 Jake Penner
 Peter & June Young Legacy Fund, held at Vancouver Foundation
 Michael Peters
 Raymond James Canada Foundation
 John & Maureen Ritchie
 Bernhard Schwab
 Ron Scott
 Sidhu Brother Trucking Ltd.
 Alison Sinclair Burns
 St. Mary's Kerrisdale
 Natalie Taylor
 TD Canada Trust, Georgia Street Branch
 Anthony Tillman
 Triple S. Trucking
 Tudor Sheil Fund via the Vancity Community Foundation
 University of British Columbia Community Engagement
 Eileen Vanderburgh
 Jenna Virk
 West Point Grey Academy, Staff and Students
 Stephanie Williams
 Wilson Family Private Giving Fund held at Nicola Wealth
 Wilson M. Beck Insurance Services Inc.
 Windward Foundation

BUDDY

\$500-\$999

78th Fraser Highlanders Association of Vancouver
 Amvantage Consulting Inc.
 Cece Angus
 Kate Anthony
 Brad Bates
 Doug Brandes
 Robert & Kathy Bromley
 Connie Buna
 Chris Burns
 Paul Changfoot
 Classic LifeCare
 Creative B'stro Inc
 Jim Crooks
 John Floren
 Denys Ford
 Freyvogel-Preiswerck Fund Advisors held at Vancouver Foundation
 Michael Frost & Laura Rhead
 Mario Furlan
 Eugenia Piedad Garcia
 GEMA Law Corporation
 Gabriela Glattstein-Young
 Mathew Good
 Rebecca Gosse
 Gudmundseth Mickelson LLP
 Suzanne Hanson-Russell
 Katy Harandi
 Sussan Harandi
 Deborah Hodge
 Rick Irwin
 J.S Dyer Law Corporation
 Matt Kennedy
 Teresa Kirschner
 Kenneth Kratschmar
 Eric Lam
 Dr. Eric Chon San Lam
 Julia Lawn
 Natalie & Jared Lazenby
 Huey Lee
 Aida Leung
 The Majorki Fund For Kids, held at Vancouver Foundation
 Brian Mauch
 Paul McNamara
 John & Sharon McNeill
 National Council of Jewish Women of Canada, Vancouver Section
 Mary O'Connor
 Natalie Paetzel
 Kate Phillips
 Mark Proctor
 BC Public Servants via Provincial Employees Community Services Fund (PECSF)
 Peter Reardon
 Elaine Ross
 Southern Butler Price
 Sustain Electric Ltd.
 TELUS Corporation
 True North Tiling Solutions
 Vancouver Community College Faculty Association

BUDDY

Vancouver Olive Oil Company
 Peter & Kathy Virvilis
 Gloria Walder
 Judy & Neil Watson
 Bonnie Watts
 Anthony Werry
 Alice Wong
 David Wood
 WPJ McCarthy and Company Ltd.
 Bishan Wu
 Melissa Zerebeski

\$250 - \$499

Joseph Abai
 Arbutus Family Holdings
 Maureen Atchison
 Dania Barakat
 Fiona Beaty
 Dianne Bentz
 Tassy Beretanos
 Jennifer Carmichael
 Allen Challmie
 Elizabeth Chapman
 Moreen Cobb
 Joan Coombe
 Iris Dayson
 Emeet Duhra
 Focused Education Resources Society
 Fulmer and Company Investments Inc.
 Van Gale
 Tawni Hall
 Laurie Halpenny
 Cayleigh Handford
 Erin Hanrahan
 Fatima Hassam
 Jean-Philippe Hervieux
 Tilman Holschuh
 Ken James
 Annabelle Joyce
 Kris Kotzer
 Kirk LaPointe
 Catherine Leppänen
 The Magee Family
 Lisa Martz
 Joanne McDonald
 Euan McGhee
 Suzanne McMurray
 Diane Milne
 Pamela Joy Mitchell
 Virginia Morgan
 Nancy Hawkins & Bill Bargeman Fund via Vancity Community
 Foundation
 Rachid & Patricia Nayel
 Wilma Nederend
 Susan Nichols
 Northern Concepts LTD
 Linda Pardek
 Alicia Prata
 Janet Rae
 Kirk Rattray
 Kirstie Rousell
 Andrea Sainas

BUDDY

Salesforce
 Alex Samur
 Lorimer Shenher
 Tim Snyders
 Shannon Soper
 Daryl Spencer
 Michael Stradiotti
 Kelly Talayco
 John Teti
 Eric Watts
 Natalie Whiteway-Wilkinson
 Sandra Witherspoon
 Stephenie Wong
 Ted Wong
 Yvonne Wray
 Xiaowen Yu
 The Zacks Family Charitable Foundation

\$100 - \$249

Ingrid & Evan Alderson
 Joy Alexander
 Leslie Anderson
 Karen Andrews
 Patricia Atchison
 Patti Bacchus
 Ahmed Barakat
 Elton Battersby
 Donna Battye
 Priscilla Brooks-Hill
 John Brosseau
 Rann Cannon
 Megan Chalmers
 Angela Chan
 Albert Chang
 Lu Chen
 Wonah Choi
 Pamela Chung
 Nigel & Janey Cole-Morgan
 Joan Conklin
 Steven Coventry
 Covista Capital
 Patricia Cuevas
 Piers Cunningham
 Tony & Teresa Da Roza
 Kristian Tait Dahl
 Heather Dalcourt
 Stephanie Daniels
 Sarah Dash
 Jamie Dee
 Jarma Del Rosario
 Leah Marie Diamond
 David Doyle
 Jennifer Dufour
 Mike Dunnigan
 Anne Earthy
 Ekona Power
 Robin Elliott
 Joyce English
 Pamela Featherstone
 Donna Fillipoff
 Sonja Foley
 Daphne Frost

BUDDY

Jennifer Galan
 Megan Galbraith
 Shirley Geldart
 Mona Gleason
 Sarah Goring
 Mary Graham
 Tiffany Grisdale Kearnes
 Muriel Groves
 Habonim Dror Camp Miriam Society
 Kevin Halasz
 Peter Hall
 Jody Harris
 Taryn Hayes
 Gonzalo Herrera
 Brie Hoffman
 Homes with Kath & Steph
 Paula Huber
 Ross & Barb Hutchison
 Natalie Izumenko
 Kibben Jackson
 Sandra James
 Jane Osler
 Juliana Jiao
 Denise Johnson
 Simone & Howard Kallner
 Michael Kaweski
 Keller Williams Realty VanCentral
 Naazmin Khataw
 Brian Kladko
 Marilyn Koyanagi
 Mischa Krawzow
 Adela Krupich
 Ku Group Holdings
 Elizabeth Lacasse
 Darci Lang
 Jane Le Bas
 Justine Leung
 Adam Zhi Li
 Justin MacDonald
 John & Maureen Maclachlan
 The Marchant Family
 Christian Martin
 Alexis Martis
 John McCarthy
 Patricia McVey
 Victoria Mendes
 Doreen & Mike Moug
 Jacqueline Mousseau
 Sean & Kerin Munro
 Dr. Stephen Nantel
 Mary Newman
 Cynthia Nickel
 O2E Brands Inc
 Bhupinder Parhar
 Amy Parker & Robert Finch Noyes
 Jamie Parker
 Patricia Parsons
 Terry Phipps
 Marnie Poettcker
 Diana Pollock
 Alexandra Prier
 Xiao Qiu
 Gail Raftery

BUDDY

Ashley Reid
 Ana Karen Reyes Chavez
 Judy Richardson
 Lindsay Richardson
 Harley & Eleanor Rothstein
 Sarah Rowe
 Allison Schein
 Nina Schmidt
 Judy Schnarr
 Cheryl Scott
 Carla Shore
 Alex Shulga
 Lisa Slouffman
 Jennifer Sly
 Lisa Sorensen
 Mark Spikula
 Janice St.Helene
 Megan Stuart-Stubbs
 Stylehaven Interior Design
 Samuel Sullivan
 James Sutcliffe
 Nick Swinburne
 JoJo Tam
 Patricia Taylor
 Christine Thompson
 Gerry Thorne
 Michelle Tseng
 Donald Urquhart
 Praveen Varshney
 Teresa Virani
 Faith Wells
 Chiara Wharton
 Jonathan Whitworth
 Sarah Wilkinson
 Marjorie Wood
 Rosemary Wray
 Mark & Cathy Wright
 Gail Wynston
 Marian Yaremy
 Rebecca Yoo
 Donald & Robin Young
 Jennifer Yule

*We also acknowledge the financial assistance of the
 Province of British Columbia

**KidSafe relies on the generosity
 of our community to provide
 hundreds of children across
 Vancouver access to a
 continuous safe space where
 they know that they belong.**



Thank you to our **monthly donors club** for your **compassion & commitment**

Anonymous
Kate Anthony
Ratinder Bains
Simran Bans
Ahmed Barakat
Dania Barakat
Fiona Beaty
Connie Buna
Jennifer Carmichael
Allen Challmie
Jin Cheong
Classic LifeCare
Moreen Cobb
Joan Coombe
Steven Coventry
Debra Clark
Jamie Dee
Jarma Del Rosario
John Fuerst & Pat Gill
Eugenia Piedad Garcia
Gabriela Glatstein-Young
Rebecca Gosse
Muriel Groves
Kevin Halasz

Tawni Hall
Laurie Halpenny
Cayleigh Handford
Deborah Hodge
Brie Hoffman
Juliana Jiao
Denise Johnson
Michael Kaweski
Kris Kotzer
Marilyn Koyanagi
Kenneth Kratschmar
Eric Lam
Natalie & Jared Lazenby
Justine Leung
Jocelyn Lewis
Kathy Li
Justin MacDonald
James & Allison MacInnis
Alexis Martis
P McLachlan
Victoria Mendes
Jenny Muir
Gayleen Ninkovich

Krystyna Niziolek
Northern Concepts LTD
Gail Olive
Jane Osler
Natalie Paetzel
Jake Penner
Alicia Prata
Sarah Roth
Kirstie Rousell
Alex Samur
Ron Scott
Tim Snyders
Jana Squires
Lynne Stanger
Alexa Stumacher
Chloe Yam & Marco Tang
Natalie Taylor
Eileen Vanderburgh
Bonnie Watts
Eric Watts
Sandra Witherspoon
Mark & Cathy Wright
Xiaowen Yu

Join the KidSafe Clubhouse today at kidsafe.ca/kidsafe-clubhouse





Website

www.kidsafe.ca

Email

info@kidsafe.ca

Social Media



@kidsafeproject



@kidsafeproject



@kidsafe



@thekidsafeprojectsociety